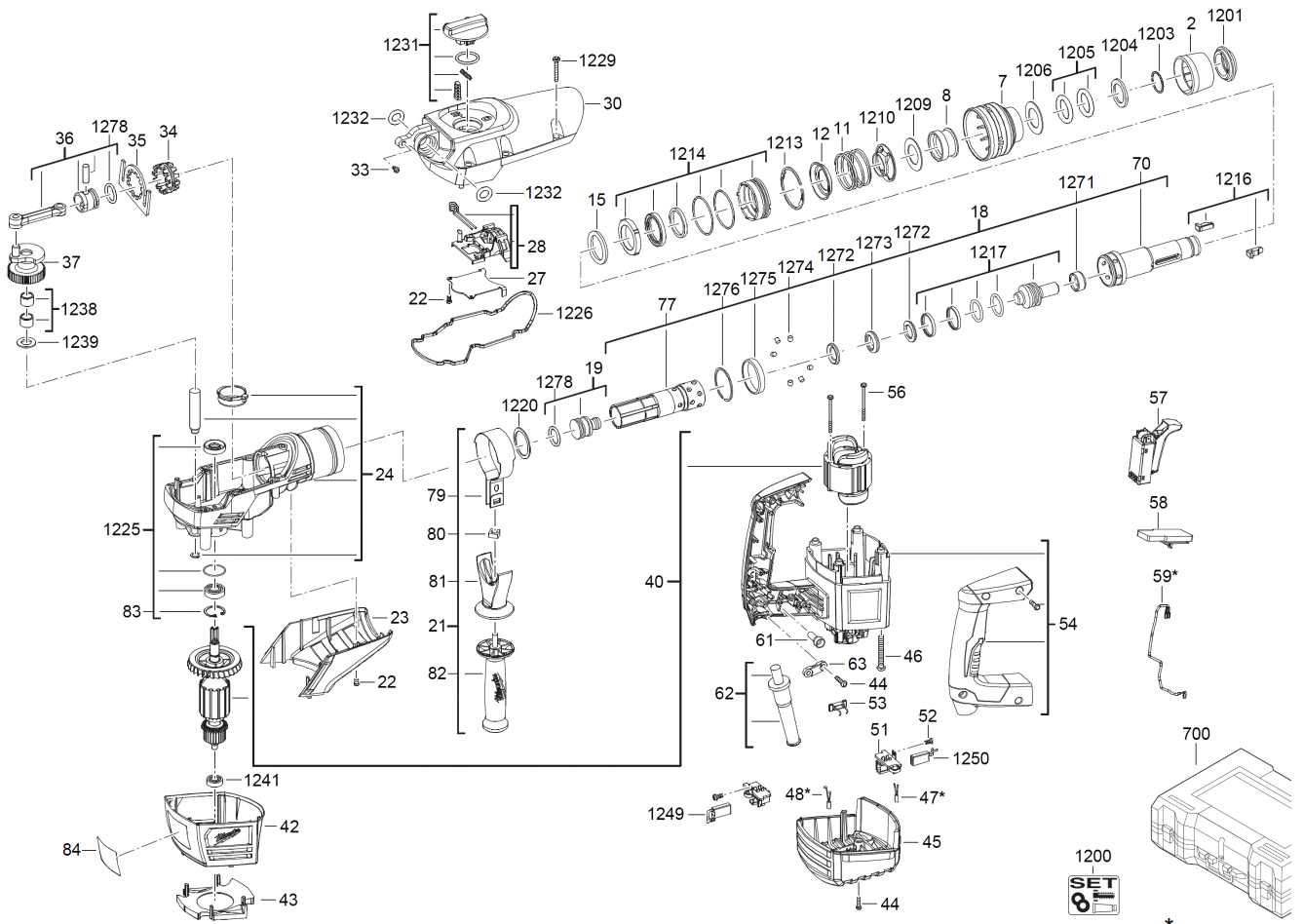


K500ST DEMOLITION HAMMER IN2

4933443180 - K500ST - 4000443181





Position	Quantity	Description	Part number	EAN
0002	1	CAP	4931435133	4002395858576
0007	1	COLLAR	4931435138	4002395859221
0008	1	INTERLOCK SLEEVE	4931435139	4002395859238
0011	1	SPRING	4931435140	4002395859245
0012	1	PLATE	633152001	4002395857708
0015	1	O-RING	4931435143	4002395859276
0018	1	SPINDLE SLEEVE	4931435146	4002395859900
0019	1	SNAP DIE	4931435147	4002395859917
0021	1	AUXILIARY HANDLE	4931435149	4002395859931
0022	1	SCREW	4931435150	4002395859948
0023	1	RETAINER	4931435151	4002395859955
0024	1	GEAR KIT	4931435928	4002395888306
0027	1	PLATE	4931435930	4002395888320
0028	1	FORK	4931440524	4002395890835
0030	1	HOUSING	4931435931	4002395888337
0033	1	SCREW	4931435162	4002395860760
0034	1	SLEEVE	4931435164	4002395860784
0035	1	INTERLOCK PLATE	4931435165	4002395860791
0036	1	PISTON AND CON ROD ASSY	4931435166	4002395860609
0037	1	EXCENTER	4931435167	4002395860616
0040	1	MOTOR ASSEMBLY	4931435193	4002395858668
0042	1	GEAR BOX ASSY	4931435933	4002395888351
0043	1	AIR DEFLECTOR RING	4931435174	4002395860685
0044	1	SCREW	660024018	4002395823741
0045	1	MOTOR COVER	4931435175	4002395860692
0046	1	SCREW	4931435176	4002395857906
0053	1	FIELD LEAD GROMMET	4931435182	4002395857968
0054	1	MOTOR HOUSING	4931435934	4002395888368
0056	2	SCREW	5131000000	
0057	1	SWITCH	4931435935	4002395888375
0058	1	ELECTRIC COMPLETE	4931435185	4002395857999
0061	1	CONNECTOR	790009001	4002395772445
0062	1	CONNECTION CABLE	4931435187	4002395858606
0063	1	CORD GRIP	4931435190	4002395858637
0070	1	DRIVER	4931435195	4002395858682
0077	1	SPINDLE SLEEVE	4931435202	4002395859351
0079	1	CLAMP	4931435204	4002395859375
0080	1	NUT	4931435205	4002395859382
0081	1	HANDLE	4931435206	4002395859399
0082	1	HANDLE	4931435207	4002395860005
0083	1	PROTECTION WASHER	4931435192	4002395858651
0084	1	RATING PLATE	4931435937	4002395888399
0700	1	CARRYING CASE	4931435211	4002395860043
1200	1	MAINTENANCE SET	4931446720	4002395879076
1201	1	RUBBER CAP	4931435353	4002395889136
1203	1	HOLDING RING	4931435134	4002395858583
1204	1	BACKING FLANGE	4931435135	4002395858590
1205	1	O-RING	4931435354	4002395889143
1206	1	WASHER	4931435137	4002395859214
1209	1	WASHER	4931431199	4002395858736

Position	Quantité	Désignation	Référence	EAN
1210	1	HOLDING PLATE	633234001	4002395857715
1213	1	PROTECTION WASHER	4931435141	4002395859252
1214	1	BEARING END PLATE	4931435142	4002395859269
1216	1	CAM	4931435144	4002395859283
1217	1	PERCUSSION BODY	4931435145	4002395859290
1220	1	DISC	4931435148	4002395859924
1225	1	BEARING AND ROTARY SEAL ASSY	4931435929	4002395888313
1226	1	SEAL	4931435155	4002395859993
1229	1	SCREW	4931435158	4002395860722
1231	1	SET COLLAR	4931435932	4002395888344
1232	1	DAMPING RING	4931435360	4002395889198
1238	1	NEEDLE BEARING	4931435168	4002395860623
1239	1	WASHER	4931435169	4002395860630
1241	1	BALL BEARING	4931435170	4002395860647
1249	1	CARBON BRUSH	4931435177	4002395857913
1250	1	CARBON BRUSH	4931435179	4002395857937
1271	1	STOP WASHER	4931435196	4002395858699
1272	1	RING	4931435197	4002395859306
1273	1	RING	4931435198	4002395859313
1274	1	PIN	4931435199	4002395859320
1276	1	DISC	4931435201	4002395859344
1278	1	O-RING	4931435203	4002395859368