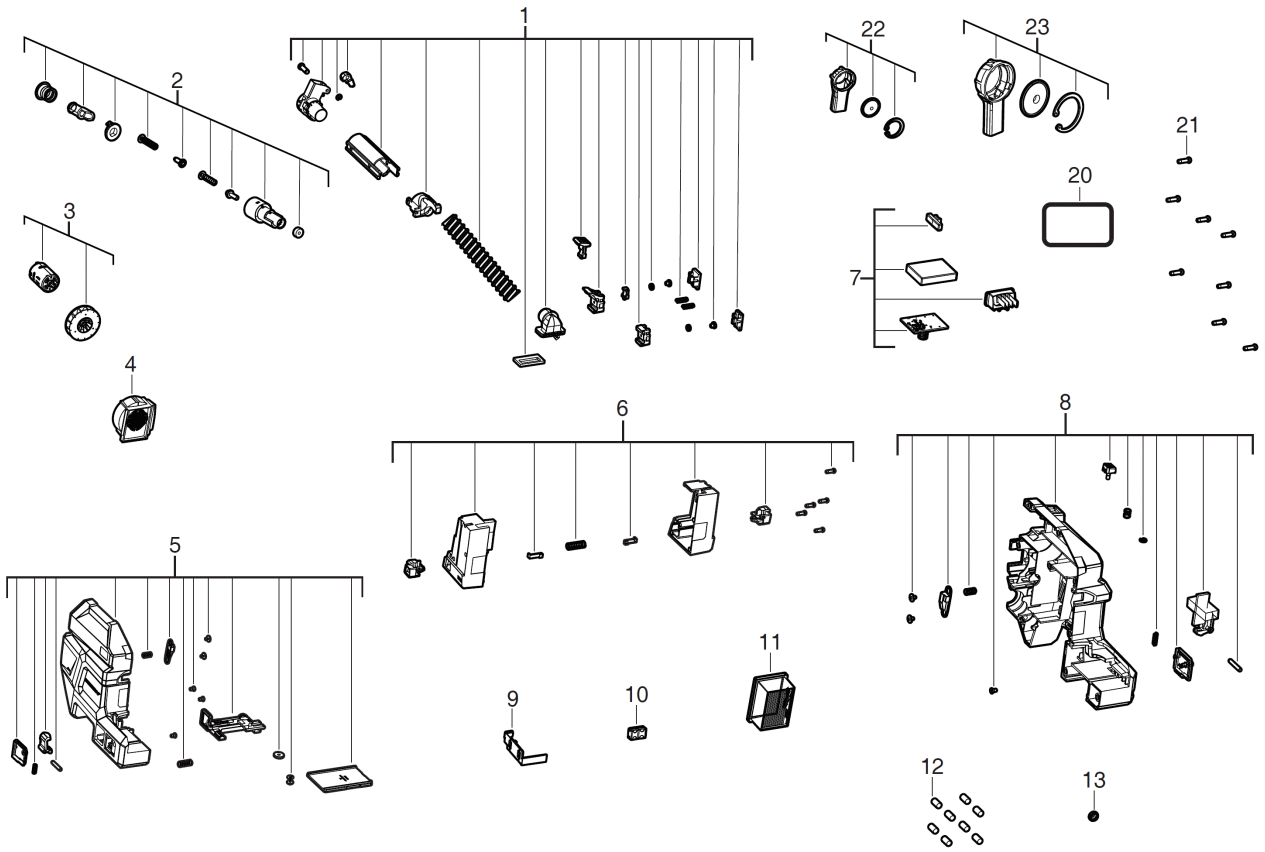


# M18FCDDXL-0 COM. DED. EXTRACTION XXX

4933478507 - M18FCDDXL-0 - 4000483628





| Position | Quantity | Description                    | Part number | EAN           |
|----------|----------|--------------------------------|-------------|---------------|
| 0001     | 1        | SUCTION PIPE                   | 4931479962  | 4058546397258 |
| 0002     | 1        | SLEEVE                         | 4931479963  | 4058546397265 |
| 0003     | 1        | MOTOR ASSEMBLY                 | 4931479964  | 4058546397272 |
| 0004     | 1        | COVER                          | 4931479965  | 4058546397289 |
| 0005     | 1        | HOUSING                        | 4931479966  | 4058546397296 |
| 0006     | 1        | DUST BOX ASSY                  | 4931479967  | 4058546397302 |
| 0007     | 1        | ELECTRONIC                     | 4931479968  | 4058546397319 |
| 0008     | 1        | HOUSING                        | 4931479969  | 4058546397326 |
| 0009     | 1        | HOLDING BRACKET                | 4931479970  | 4058546397333 |
| 0010     | 1        | RUBBER BUMPER                  | 4931479680  | 4058546394431 |
| 0011     | 1        | M12DE DUST FILTER FILTER - 3PC | 49902306    | 45242299454   |
| 0012     | 1        | RUBBER BUFFER                  | 4931479971  | 4058546397340 |
| 0013     | 1        | RUBBER CAP                     | 4931479972  | 4058546397357 |
| 0020     | 1        | RATING PLATE                   | 4931479973  | 4058546397364 |
| 0021     | 9        | SCREW                          | 660570005   | 4002395827329 |
| 0022     | 1        | NOZZLE                         | 4931479974  | 4058546397371 |
| 0023     | 1        | NOZZLE                         | 4931479975  | 4058546397388 |